

## **Troy Historic Village**

- 1. THV Site Plan 2009**
- 2. NB House Circulation**
- 3. NB House Space Allocation**
- 4. NB House Architect's Rendering, main floor**

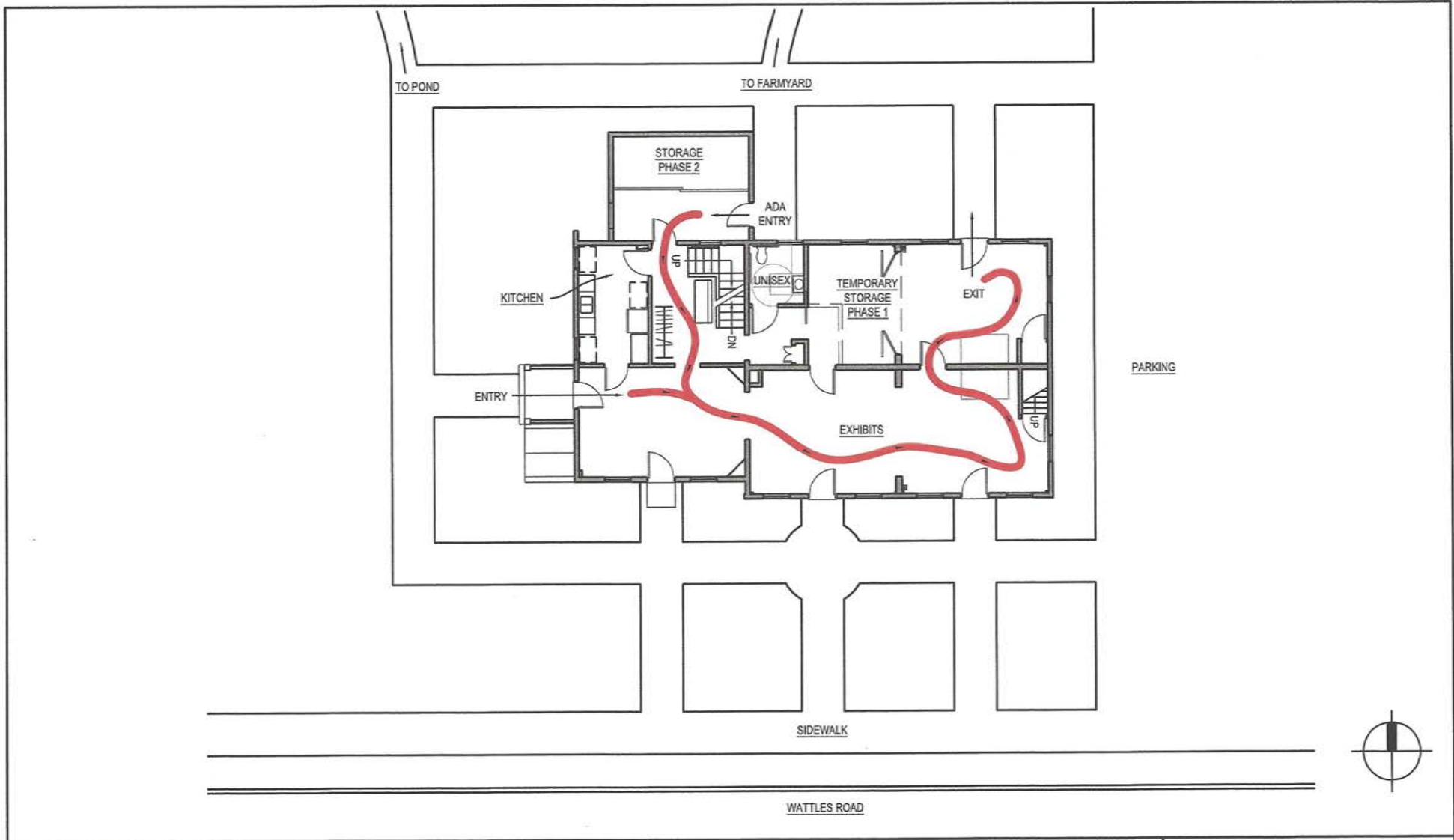


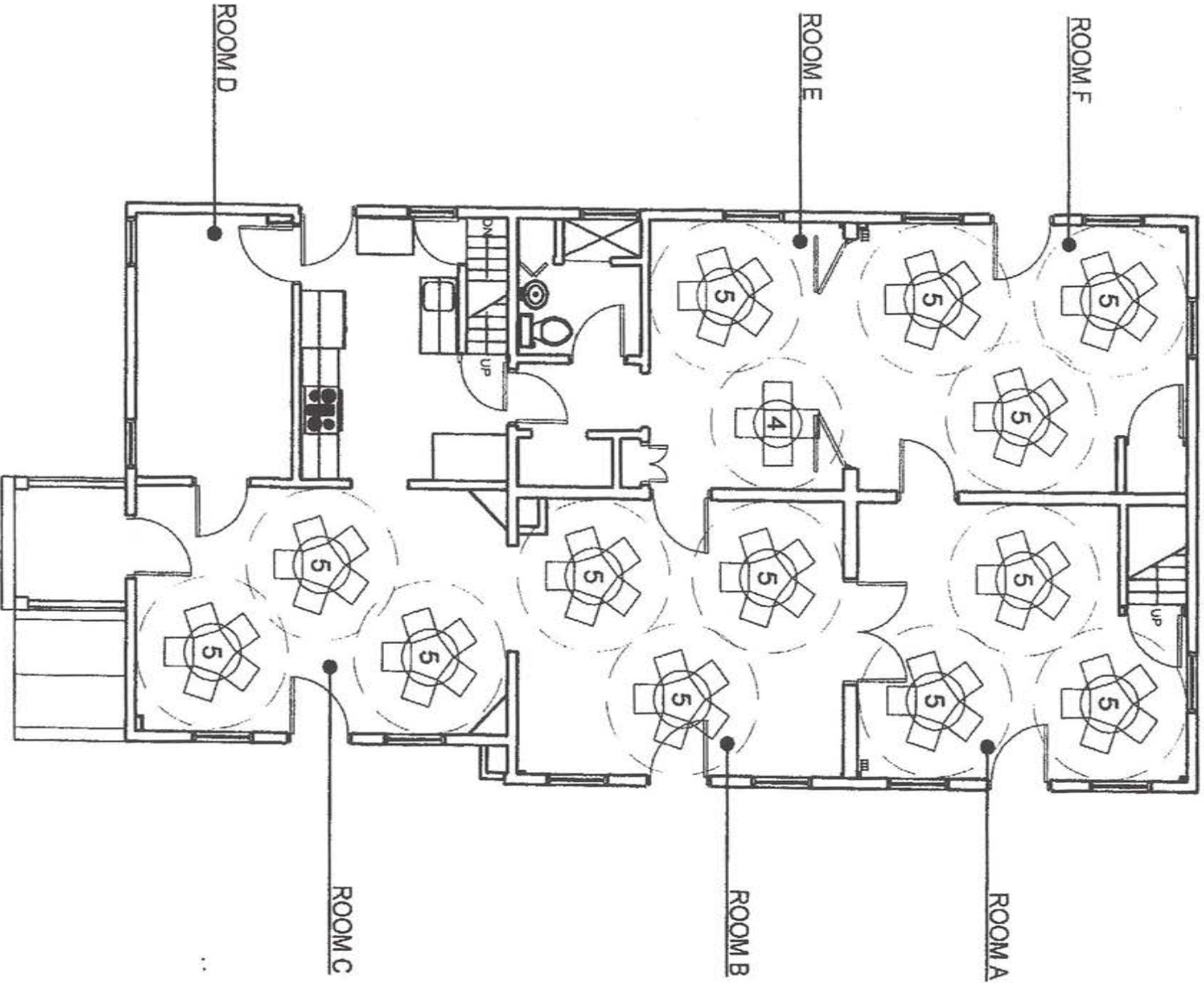
LIVERNOIS AVENUE

LANGE AVENUE

WATTLES ROAD

- 1 Log Cabin
- 2 Parking on Gravel
- 3
- 4
- 5
- 6
- 7
- 8
- 9
- 10
- 11
- 12
- 13
- 14
- 15
- 16 Town Green
- 17 Visitor's Center/Relocated Barn
- 18 Green Roof
- 19 Farm Yard
- 20 Prairie
- 21 Barnyard House
- 22 Bus Drop-off/Pick-up
- 23 Bio-retention
- 24 Main Parking 60 Spots with Subsurface Detention
- 25 Bio-retention
- 26 Entry Sign





HopkinsBurns <small>DESIGN STUDIO</small>	ATTACHMENT B <small>1/8" = 1'-0"</small>	Space Allocation <small>3/4/2014</small>	B
--	---	---	---

NB HOUSE RENDERING  
HOPKINS BURNS DESIGN STUDIO  
MAIN FLOOR, LOOKING  
FROM ROOM C TO ROOM A

